

NCG²⁵ AXIAL CUTTER

Fully automatic machine to cut, bend and crimp taped or loose axial

The advantages of the POLYVER processing system:

- Setup time less than 40 sec.
- Highest repetitive precision
- 100% Stress free on all processes
- Smallest cross-sectional deformation, (<5% cross intersectional deformation)
- Minimal mechanical knowledge requested
- Best choice for multi-shift operations
- Best choice for small amounts with high diversity
- Control unit SIEMENS or B&R
- MRX belt component feeding unit
 - Feeds in also slightly bent leads
 - Eliminates jamming in the unit
 - Independent from component pitch
- Great flexibility because of continuous adjustable possibilities
- Easy set-up and operating; storage capabilities of the geometries
- Tool exchange in less than 2 minutes
- Processing of horizontal and vertical components on the same machine
- Wide setting range – Pitch size up to 65mm
- Large variety of crimping and forming tools
- Capabilities to process from roll or ammo pack
- Automatic production with preset counter
- Maintenance assistance

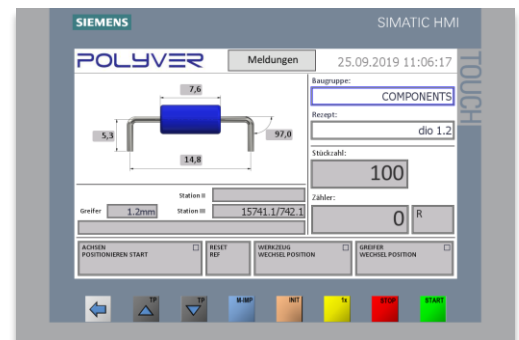
The NCGG25-Cutter is a fully automatic machine to cut, bend and crimp taped or loose axial components. The NCGG25-Cutter is the same concept as the G2-Cutter. Instead of setting up the 5 or 6 axis manually, it is done by servo motors



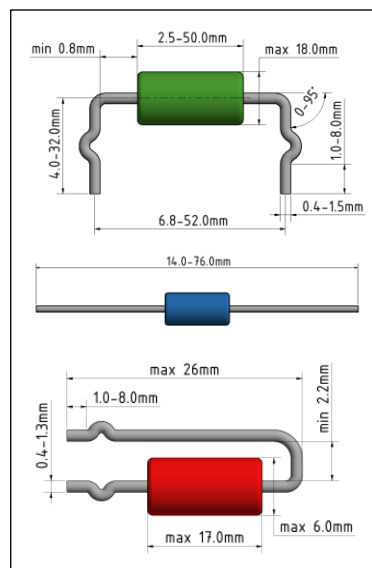
SAMPLE COMPONENTS



CONTROL PANEL



SPECIFICATIONS



Setup precision: The setup precision of the axis is 0.1mm. All axis values can be stored in the database of the SIEMENS panel.

4800 data records: 48 databases with each 100 data sets can be stored in the smallest Siemens panel

Synchronization: No synchronization of the data necessary. The axis are always on the actual value of the data set.

Process reliability: The correct position of all axes is mandatory to start the production. If the value of an axis does not match the value of the data set, the machine cannot be started. Full process reliability is hereby given.

Backup: The records on the panel can be stored on a USB stick for data safety purposes. If the panel should break down, the records and all necessary software will be save.



TEL: +41 (32) 653 88 11 ♦ FAX: +41 (32) 653 88 13 ♦ email: info@polyver.com ♦ internet: www.polyver.com

Bischmattstrasse 11a ♦ 2544 Bettlach ♦ Schweiz – Switzerland